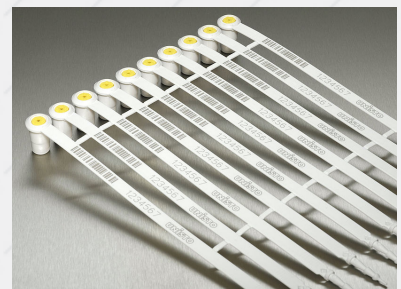


## Unisto Indicator



Fixlength Security Seal with a unique designed double-locking closing mechanism. That seal is the optimal solution for sealing of Freight Containers, truck and trailer doors. Well-established in the Transport, Retail, Railway and Logistic sectors. A indicator pin at the end of the strap indicates a proper sealing once seal is closed. Clearly visible breakpoint outside the housing makes it easy to control the seal. Consecutive numbering or barcode enables easy recording of the seal numbers and streamlines operations. Variety of colours for logistical control are available.

---

## Features of this security seal

### **Type of Seal**

Fixlength Seals

---

### **Application**

Container, Diverse

---

- › The ultimate double-locking seal with two separate spring inserts which render any post-sealing tampering impossible
- › Spring inserts moulded from engineering plastic and capable to withstand high temperature
- › Cap is secured by unique hot-welding that leaves marks of attempted tampering
- › Indicator pin protrudes from the back of the seal lock to indicate proper sealing
- › Anti-Spin closure

**Minimum size**



**Materials**

Strap/housing: polypropylene (PP)  
 Locking spring: polyoxymethylene (POM)

**Tensile strength (loop)**

Approx. 108N (11kg)

**Numbering**

Up to 7 digits

**Barcoding**

Interleaved 2/5 or barcode 128  
 others on request

**Customer name/logo**

Foil printed or directly laser-marked

**Plastic colours (foil)**

Red, Blue, Yellow, White, Orange & Green

**Plastic colours (laser)**

Pink, Light Blue, Light Yellow, Light Green & White

**Packing**

Mats of 10 pieces, box of 1000 seals, box a 5000 pcs

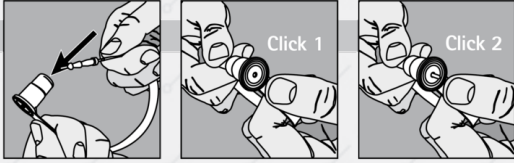
**Packing size**

box	210mm	363 x 189 x 195	mm	3.6kg
carton	210mm	985 x 375 x 218	mm	19.1kg

**Storage**

Seals should be stored in original box away from direct sunlight and chemical fumes.  
 Store at 22°C/50% RH. Typical shelf life of seals made of PP and PA are approx. 18 months from date of manufacture.  
 Nevertheless please do not order more than an annual quantity.

How to close



How to open

